

# Crystal Bridges

## Peer Leader

Hannah Christeson '18

## Orientation Leaders

Michelle Delouise '19

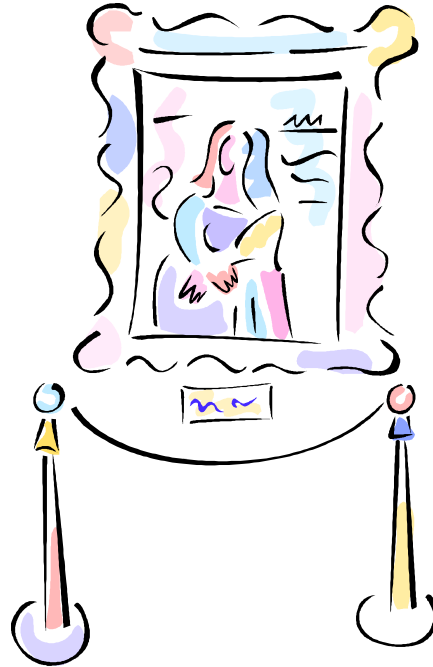
Anuki Kachchakaduge '20

Giorgy Sarishvili '18

## Faculty/Staff Advisor

Drs. Bill Tsutsui & Marjorie Swann

President of College & Professor of English



## You need to bring:

**Sleeping:** a pillow, beds and bedding will be provided

**For hiking:** Comfortable clothing, sturdy shoes, water bottle, etc.

**Toiletries:** Toothbrush, soap, towel, yes there are hot showers 😊

**Extras:** Camera, swimsuit for the state park, sunscreen, etc.



## What we have planned for you:

You will stay two nights at Rocky Branch Resort in cabins. During Saturday you are going to be exploring world-renowned museum in Bentonville, AR. You'll also be treated to a fine dining experience at the museum's Eleven Restaurant Crepes Paulette. You will spend the nights relaxing in your cabins and playing games!

## Don't forget:

Your trip leaves at 1:00pm on Friday, August 18th. Be sure to check with your leaders when you arrive to confirm your departure time.